

043516

RECEIVED
LARAMIE COUNTY
CHEYENNE, WY.

CERTIFIED LAND CORNER RECORDATION 88 MAY 5 PM 1 31

DESCRIPTION OF CORNER EVIDENCE FOUND, AND ORIGINAL RECORD (If known)

Found black granite stone 4"x8" projecting 10" above ground firmly set w/4 plainly marked on North face.

1/4 S.29
1/4 S.32
T.18N., R.67W.
6th P.M.

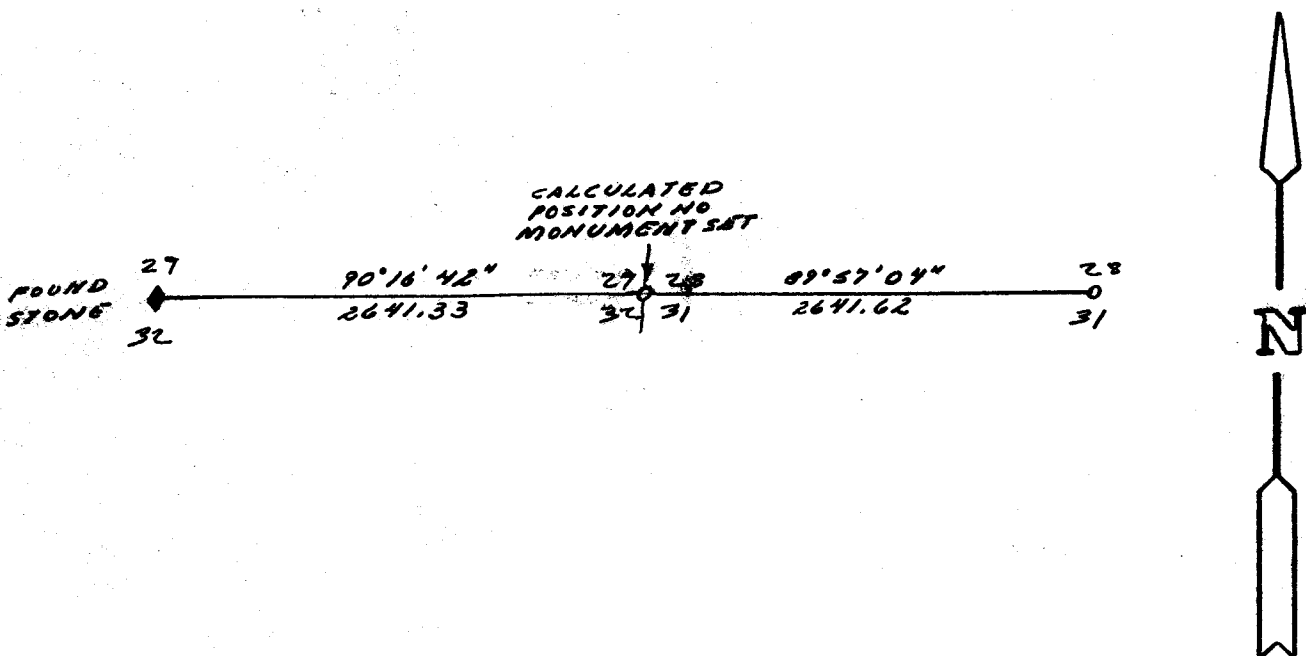
G.L.O. Record: Unknown.

DESCRIPTION OF MONUMENT AND ACCESSORIES ESTABLISHED TO PERPETUATE THE ORIGINAL LOCATION OF THIS CORNER:

At the corner: Not remonumented.

Accessories: See ties below.

SKETCH, WITH COURSE AND DISTANCE TO ADJACENT CORNER IF DETERMINED IN THIS SURVEY.
(May Sketch or Paste Reproduction on Reverse Side.)



I, John A. Steil certify that I have carefully performed or reviewed the work done on the diagrammed corner as reported on this recordation form and approve the same.

John A. Steil
Signature of Surveyor

L.S. 2500
Registration No.

STATE OF WYOMING,
Office of Clerk and Recorder,
County of Laramie

This "corner record" was filed for record on the 5th day of May, 1988, was noted on the cross-index plat and is assigned page No. 2030, in book No. 1859

Janet C. Whitehead
County Official

| | | | | | | | |
|-----------------|-----|----|-----|----|-----|------|-----|
| Cross Index No. | V-7 | T. | 18N | R. | 67W | Mer. | 6th |
| | | T. | | R. | | Mer. | |
| | | T. | | R. | | Mer. | |
| | | T. | | R. | | Mer. | |
| | | T. | | R. | | Mer. | |
| | | T. | | R. | | Mer. | |
| | | T. | | R. | | Mer. | |

BOOK 1259

2030